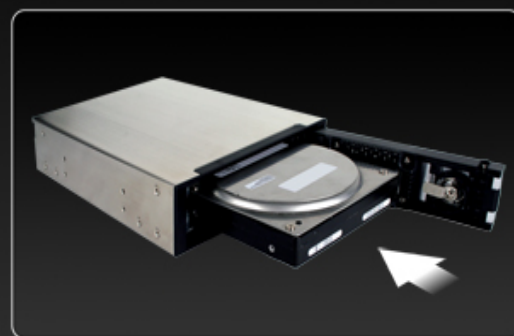
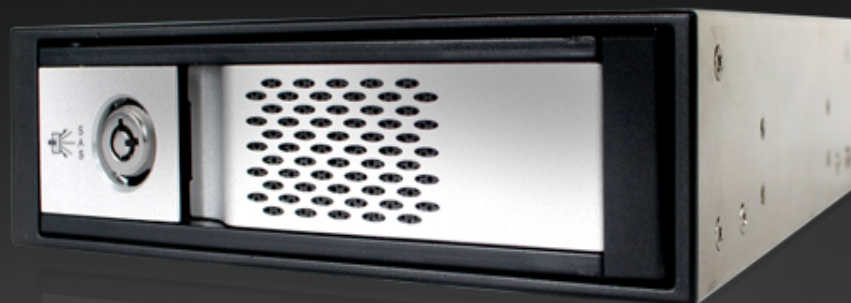


# MB671IK

*Screw-less 3.5" SAS & SATA Internal Mobile Rack*

**ICY DOCK®**  
www.icydock.com



Hassle-free Installation



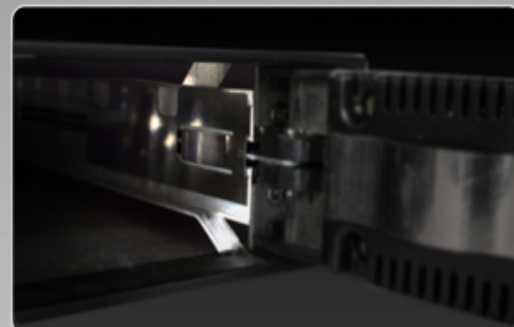
7 Pin SATA Connector x 2 w/ Cooling Fan



Heavy Duty Steel Body Structure



2 Segment Safeguard Key Lock



Anti-Vibration kit keeps HDD quiet & Safe

## Key Selling Features

- \* Drive Fit : Hot Swappable 1 x 3.5" SAS & SATA I or II.
- \* Device Fit : 1 x 5.25" device bay.
- \* User friendly Screw-less design just plug in the hard drive and play.
- \* Multi-drive exchangeability, hot swap capability & maintenance capabilities.
- \* Safeguard key lock function to disable the data accessibility from others
- \* Stylish faceplate with metal cooling body
- \* Warm air outtake fan makes cooling of the drive

|                   |   |
|-------------------|---|
| Item Number:      | MB671IK-B   |
| Internal Host     | 7 pin SATA x 2                                      |
| Drive Fit         | 1 x 3.5" SAS / SATA I & II                          |
| Drive Bay         | 1 x 5.25"   |
| Transfer Rate     | 300 MB/sec.   |
| Structure         | Steel body w/ partial plastic & aluminum face panel |
| Drive Cooling     | Metal heat dispersion w/ 1 x rear outtake fan       |
| LED Indication    | Device Power & Drive Activity                       |
| LED Display Color | Green : Device Power ; Amber : Drive Activity       |
| Drive Security    | 2 segment key lock                                  |
| Dimension (LxWxH) | 184.4 x 148.4 x 42mm                                |
| Weight            | 1.82 lbs.   |