

# MB123IK-1 *300MB/s, 15000RPM, Enjoy the power of SAS.*

3.5" SAS / SATA Internal Aluminum Mobile Rack

ICY DOCK®  
www.icydock.com



## Key Selling Features

- \* Drive Fit : 1 x 3.5" Hot Swappable SAS & SATA I or II.
- \* Device Fit : 1 x 5.25" device bay.
- \* Internal drive security, exchangeability, expandability and maintenance capabilities.
- \* Stylish faceplate with aluminum cooling body.
- \* 40mm air outtake fan cooling of drive.
- \* Safeguard key lock capable of power control to disable data accessibility from others.
- \* Compact size version in SAS is available for limited depth integration.

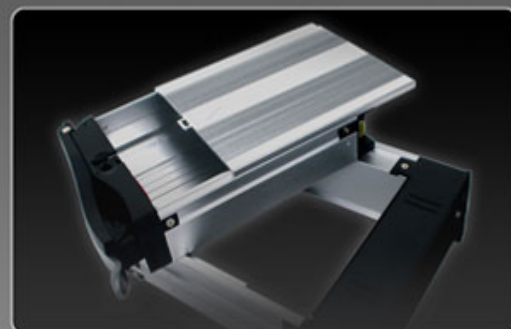
Item Number:	MB123IK-1
Internal Host	7 pin SATA x 2
Drive Fit	1 x 3.5" SATA I / II
Drive Bay	1 x 5.25"
Transfer Rate	up to 3 Gb/sec.
Structure	Aluminum body w/ partial plastic
Drive Cooling	Aluminum heat dispersion w/ 1 x rear outtake fan
LED Indication	Device Power & Drive Activity
LED Display Color	Green : Device Power ; Amber : Drive Activity
Drive Security	2 segment key lock
Dimension (L x W x H)	198.0 x 148.0 x 42.0 mm
Weight	1.50 lbs.



Security Key Lock



2 x 7 pin DATA Connector



Solid Aluminum Construction



Removable HDD Tray Design

